

# AIO

ALL IN ONE LASERSYSTEMS

From InfraRED to GREEN



Compact, robust housing  
in lightweight monoblock design



Two safe inputs up to PL e  
(Cat. 4) according to EN ISO 13849-1



Reduced installation effort



User-friendly software  
under Windows XP / 7 / 8 / 10



Fully integrated, ultra-compact  
All-In-One Q-switched DPSS laser



Galvanically isolated interfaces  
(IO's, USB, Ethernet)

## Simply compact

The AIO laser is the most compact Q-switched DPSS laser. AIO laser systems are offered in a robust and lightweight monoblock design and enable a wide variety of marking applications that are also suitable for micromachining.

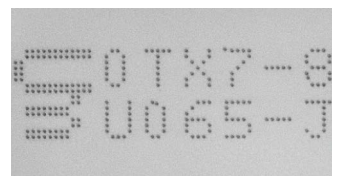
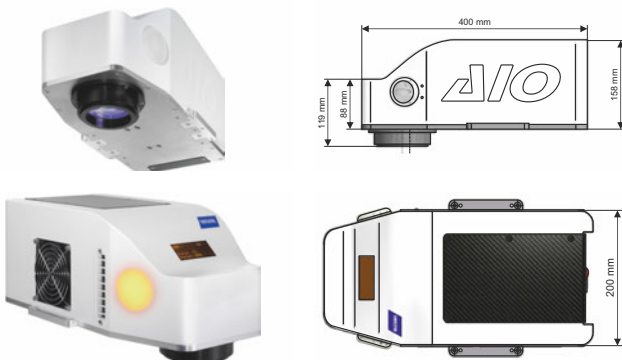
The "All In One" monoblock design eliminates the need for external optical fiber and other sensitive cable connections for system integration. The simple and secure integration, even in confined spaces, is another advantage of the AIO laser system.

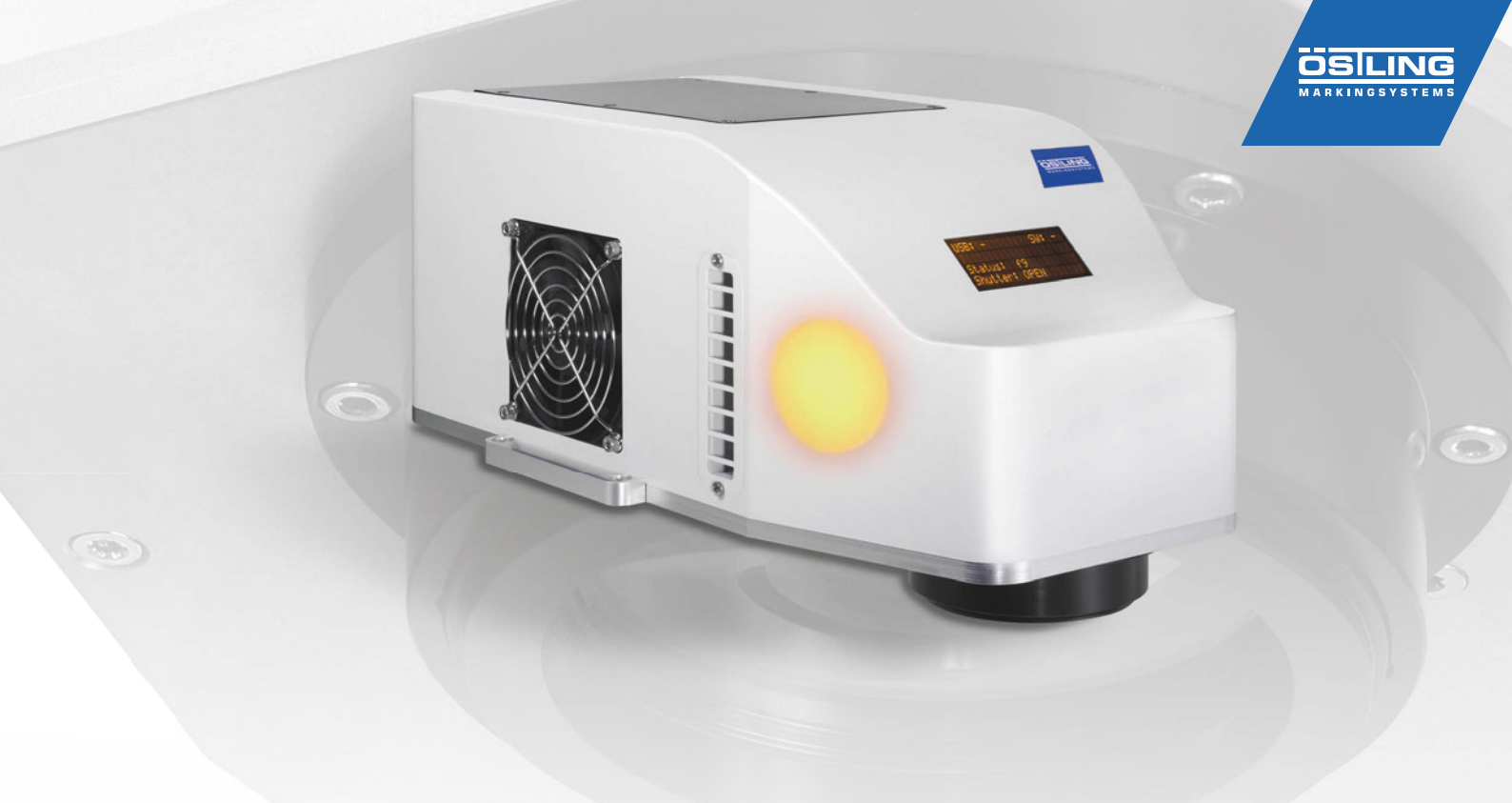
## Simple Integration

More than one USB or network connection to a standard PC is not required to control the AIO laser.

The AIO laser combines resonator and laser source, so that both the rack and the fiber, which is usually the connecting piece between optics and supply unit, are omitted.

The distance to the workstation can therefore be almost arbitrary and the marking process can easily be spatially decoupled from the control. Compared to conventional laser systems, the integration of the AIO laser has been considerably simplified.





	<b>ΔIOP</b>	<b>ΔIOM</b>	<b>ΔIOG</b>	<b>ΔIOG+</b>
<b>Laser class</b>	4	4	4	4
<b>Wavelength</b>	1064 nm	1064 nm	532 nm	532 nm
<b>Pulse repetition frequency</b>	10 KHz to 100 KHz	10 KHz to 100 KHz	10 KHz to 100 KHz	1 KHz to 100 KHz
<b>Pulse width</b>	15 to 70 ns	7 to 35 ns	10 to 50 ns	2 to 10 ns
<b>Beam quality</b>	< 1,5	< 2	< 2	< 1,5
<b>Electrical supply</b>	24 V DC max 14 A (Power Supply optionally available)			
<b>Cooling System</b>	integrated thermo-electrical air cooling system			
<b>Weight</b>	12 Kg   Power Supply (optional) 1,3 Kg			
<b>Hardware Interfaces</b>	USB, Ethernet, 3 Stepper motor axes, galvanically isolated interfaces (IO's, USB, Ethernet), 2 safe inputs up to <b>PL e (Kat. 4) nach ISO 13849-1</b>			
<b>Fonts</b>	Format: TrueType Fonts (filled / unfilled), Single Line Fonts, PostScript Fonts Orientation: free defined Letter spacing: free defined Arc text: scalable and adjustable			
<b>Codes</b>	Barcodes: Code 2/5, Code 3/9, Code 128, EAN 8/13, UPC 2D Codes: DataMatrix, PDF 417, QR-Code, Code 16K <b>More than 60 different 1D and 2D codes in total</b>			
<b>Misc. Features</b>	Flexible serial numbers, date and time functions Freely programmable script interface for processing variable data from subroutines Text and data transfer from databases (ODBC) Excel tables   TCP - Client User-defined masks Extensive program help and functions			
<b>Options</b>	Programmable X-, Y-, Z-, rotary axis (up to 3 simultaneously possible) Additional laser diode as optical focusing aid Extraction systems   Profinet / ProfiBus Remote control via external command box (e.g. start/stop, emergency stop)			